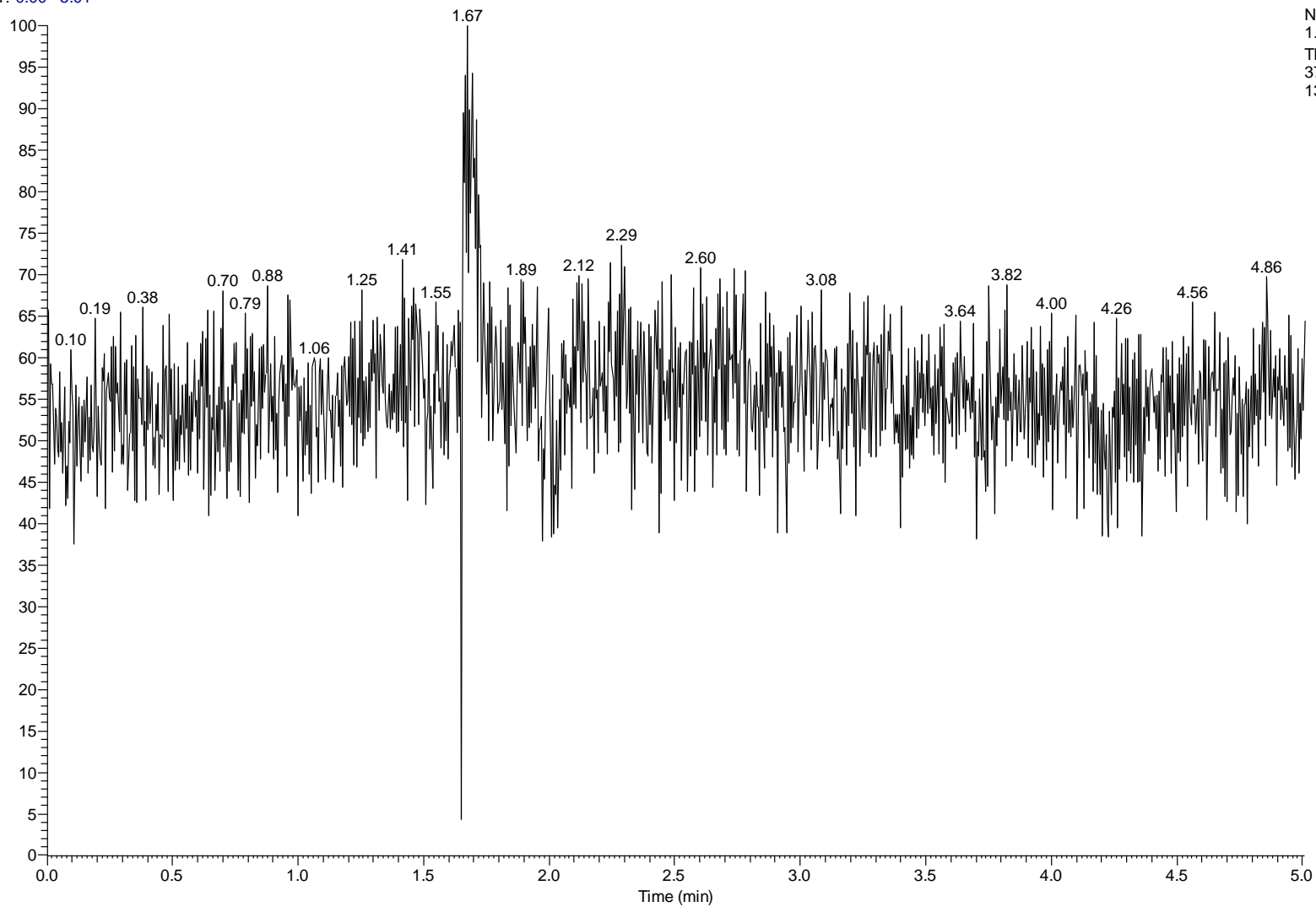
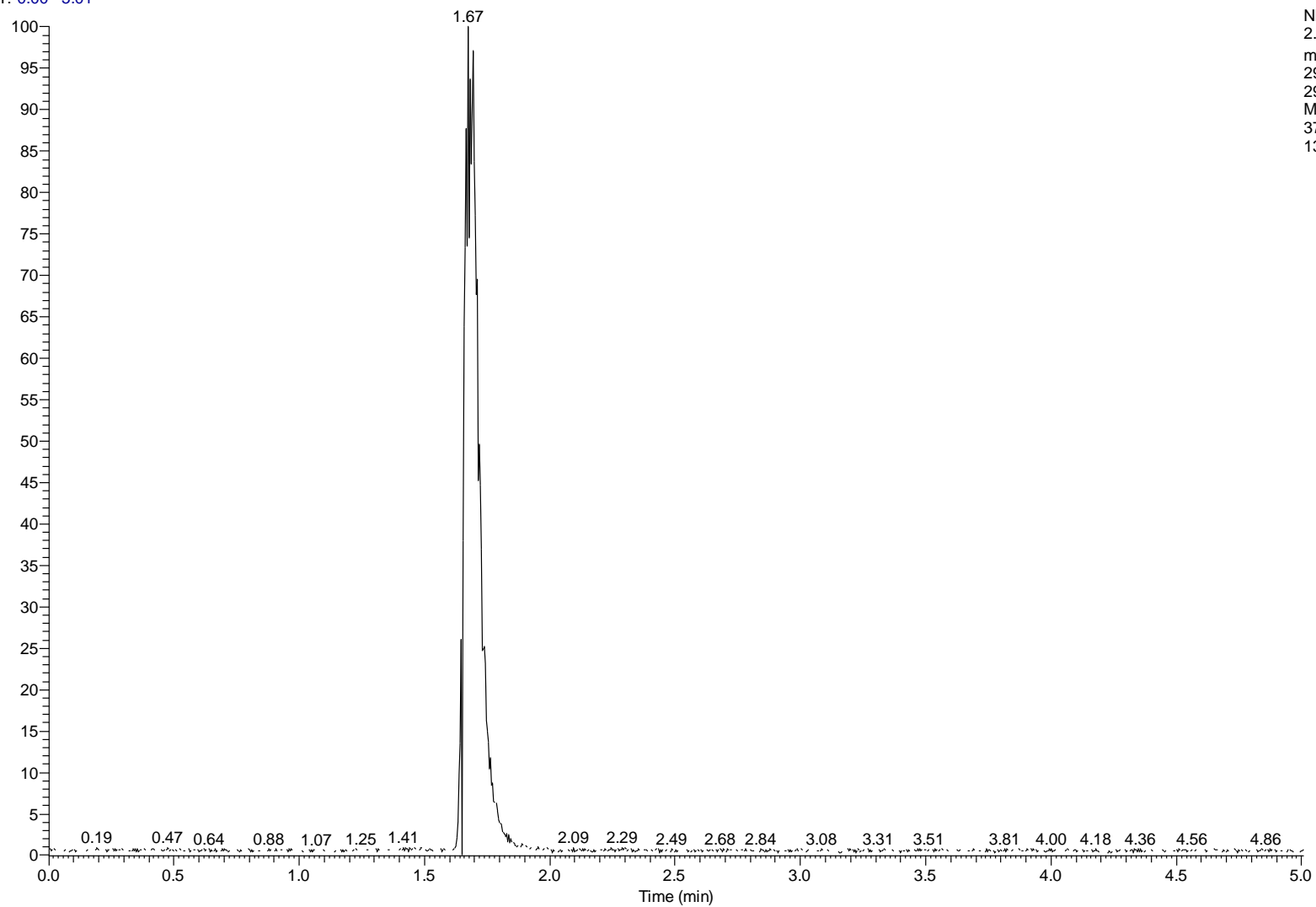


RT: 0.00 - 5.01

NL:
1.28E9
TIC MS
37B1_2306
13105150

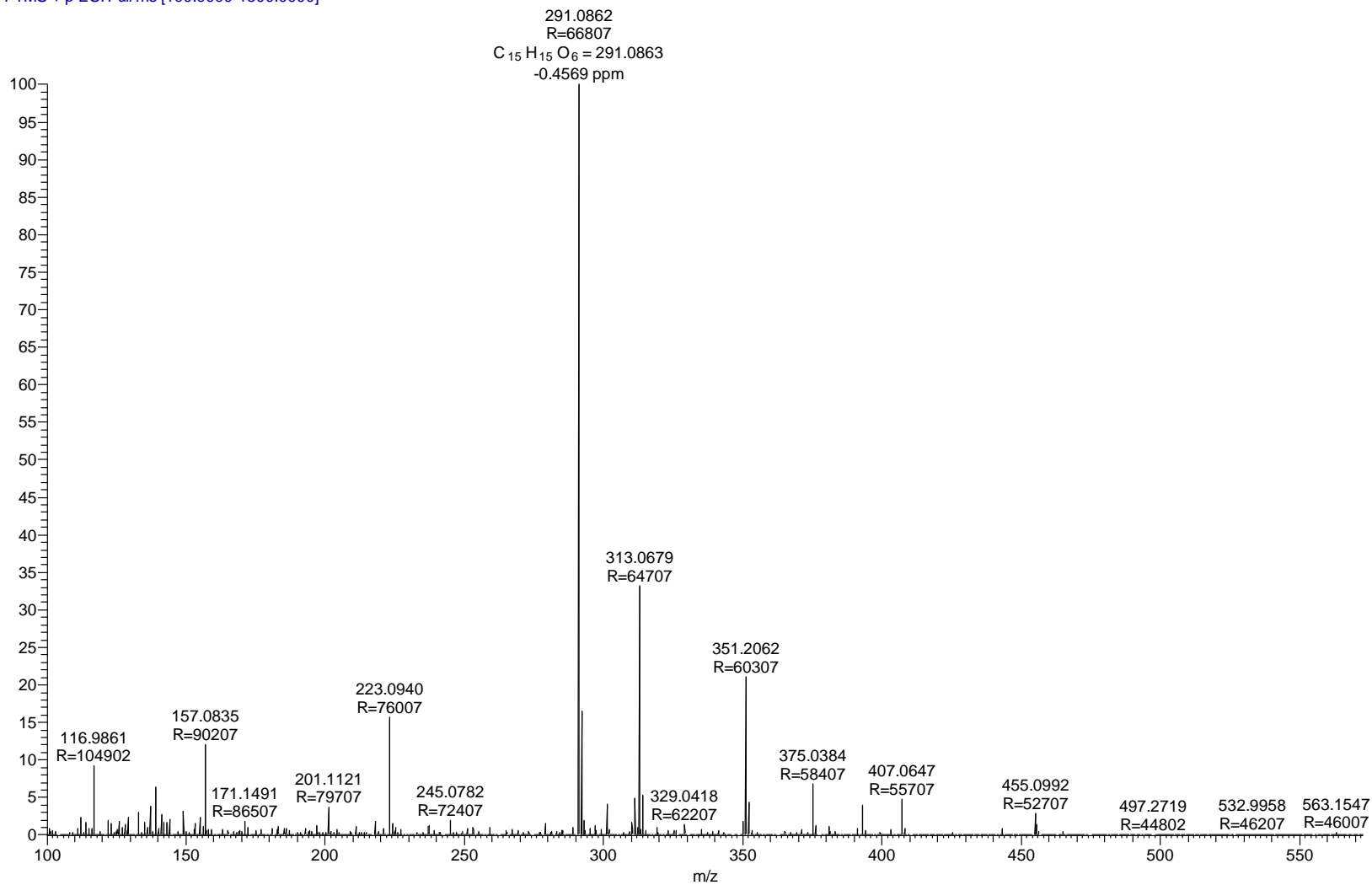


RT: 0.00 - 5.01



NL:
2.19E8
m/z=
290.50-
291.50
MS
37B1_2306
13105150

37B1_230613105150 #377 RT: 1.67 AV: 1 NL: 2.12E8
T: FTMS + p ESI Full ms [100.0000-1500.0000]



37B1_230613105150 #371 RT: 1.65 AV: 1 NL: 1.69E7
T: FTMS + p ESI d Full ms2 291.0861@hcd30.00 [50.0000-315.0000]

